

EasySpectrum Install Guide

1 Prior to Installation

1.1 Hardware requirement

- Internal memory: 1 GB or higher (2 GB or higher is recommended.)
- Monitor: 1024x800 or higher resolution
- Processor: 1 GHz or higher (2 GHz or higher is recommended.)
- Hard disk: 100 MB or higher

1.2 System Support

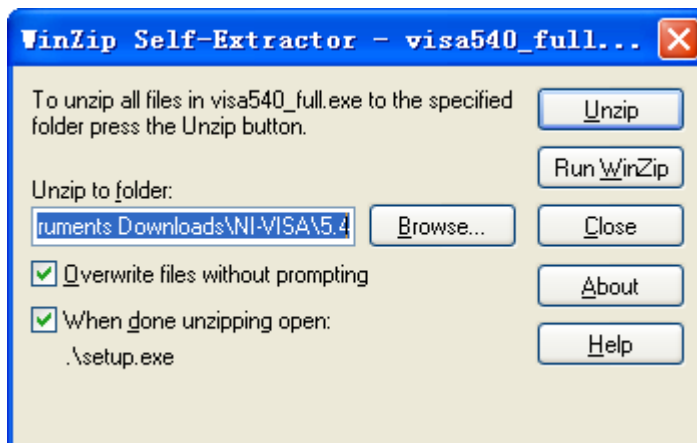
- Microsoft Windows XP system
- Win7 32bit and 64bit system
- Windows 8 32bit and 64bit system.
- Windows10 32bit and 64bit system.

1.3 Software requirement

NI-VISA:

Before installing the EasyWave application, you have to install NI-VISA 5.4 or a higher version, which you can download from the [NI-VISA](http://www.ni.com/download/ni-visa-5.4/4230/en/) web site at: <http://www.ni.com/download/ni-visa-5.4/4230/en/>. After you download the file you can follow the steps below to install it:

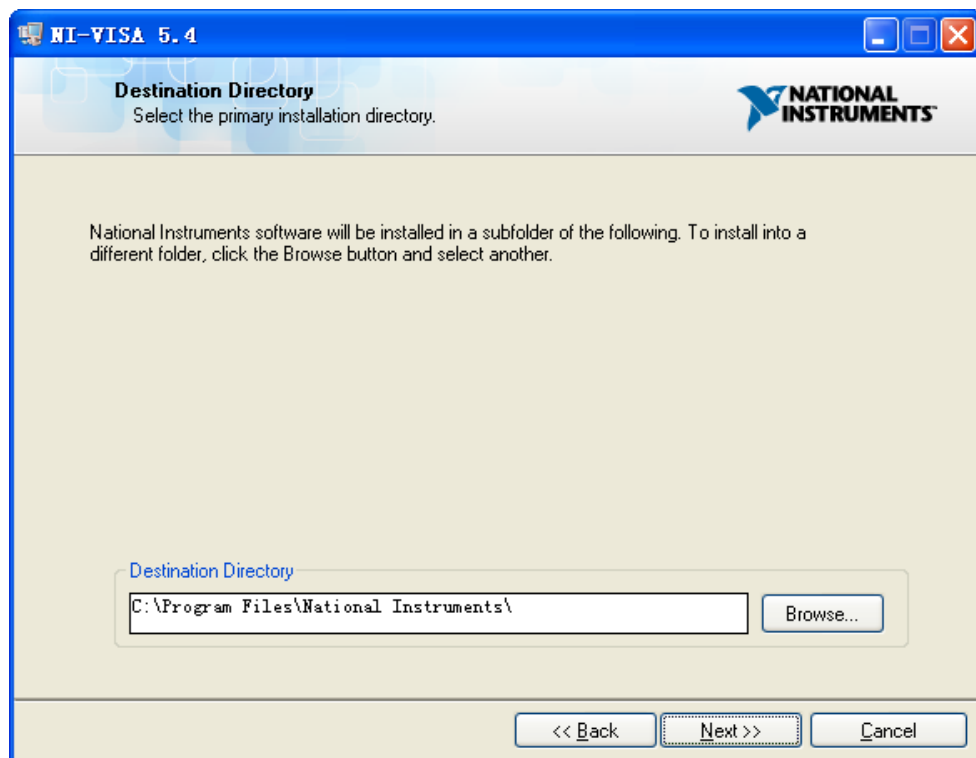
- a. Double click the visa540_full.exe, dialog shown as below:



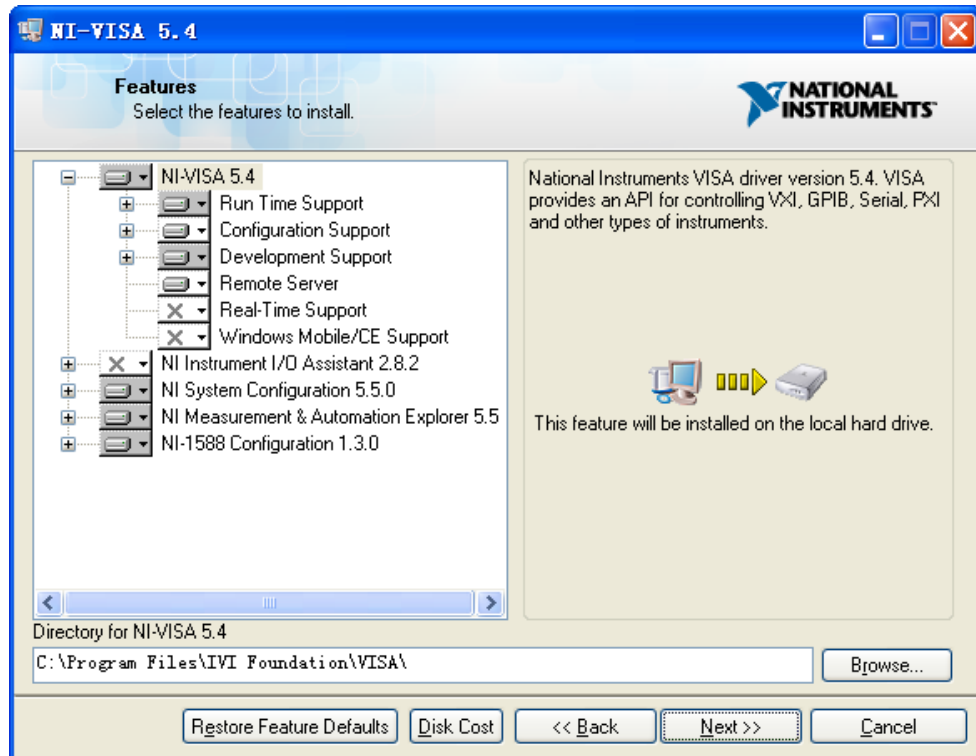
- b. Click Unzip, the install process will launch after unzipping files. If your computer needs to install .NET Framework 4, its Setup process will auto start.



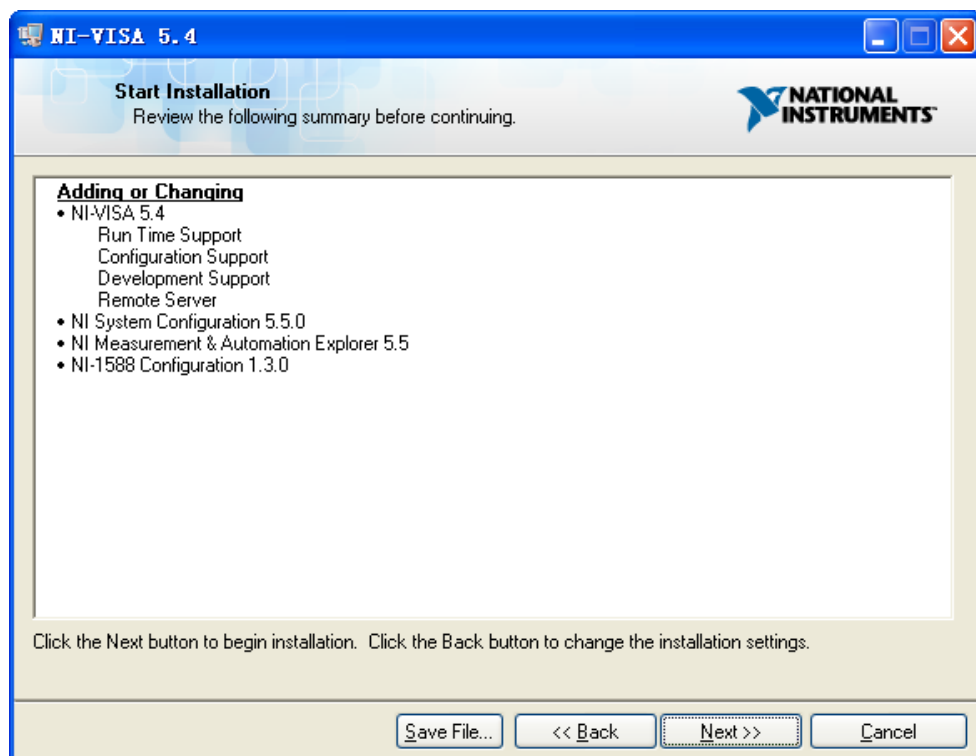
- c. The NI-VISA install dialog is shown above. Click Next to start the installation process.



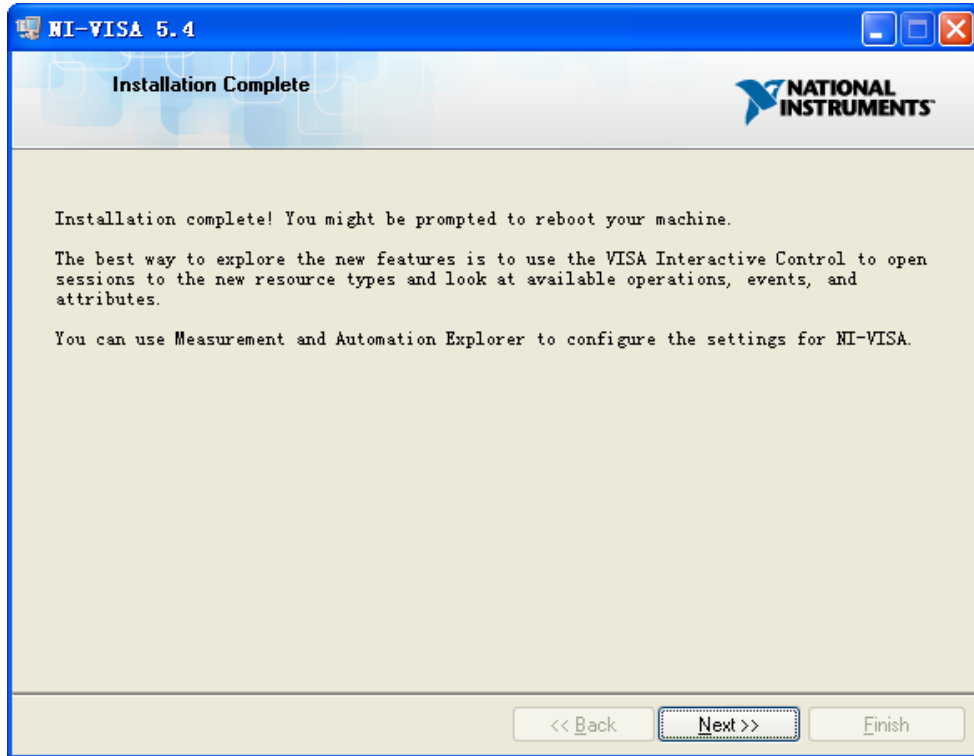
- d. Set the install path, default path is "C:\Program Files\National Instruments\\"", you can change it. Click Next, dialog as shown above.



- e. Click Next twice, in the License Agreement dialog, select the “I accept the above 2 License Agreement(s).”, and click Next, dialog as shown below:



- f. Click Next to begin installation.



g. Now the installation is complete, reboot your PC.

If you don't want to install the tools in NI-VISA, you can install only the NI-VISA runtime engine, which is much smaller than the full version. For example, download [NI-VISA Run-Time Engine 5.4](#) to your PC and install it as default selection. Its installation process is similar to the full version.

2 EasySpectrum Software Installation

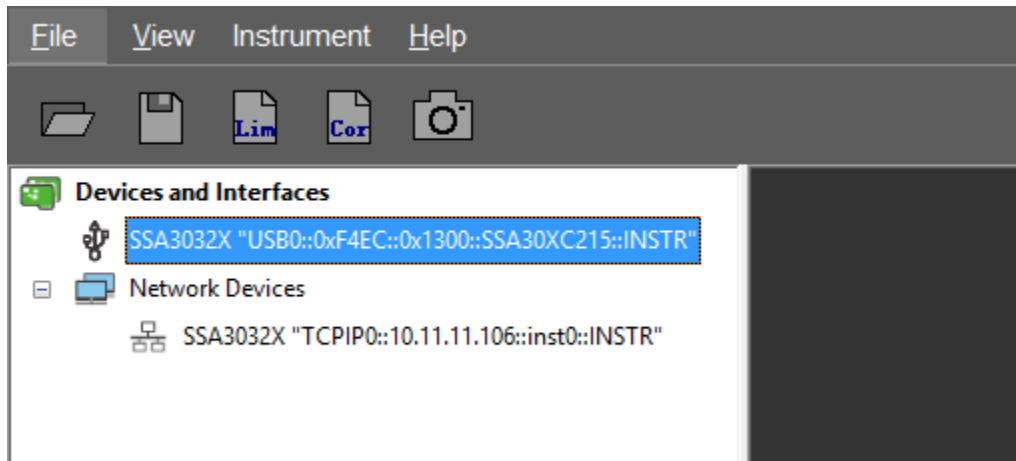
Double click "EasySpectrum.exe", and then click **Next** to install the software following the instructions and complete the installation. After **EasySpectrum** is correctly installed, a shortcut icon named " EasySpectrum " is displayed on the desktop.

2.1 Connect the Instrument to PC

You can realize the communication between the PC and the instrument via the **USB** or **LAN** interface to control the instrument.

2.1.1 To Connect the Instrument via USB

- (1) Please connect the spectrum analyzer to the PC correctly via a USB cable.
- (2) If NI-VISA has been correctly installed on your PC, **EasySpectrum** can directly recognize the connected instrument as shown in the figure below.



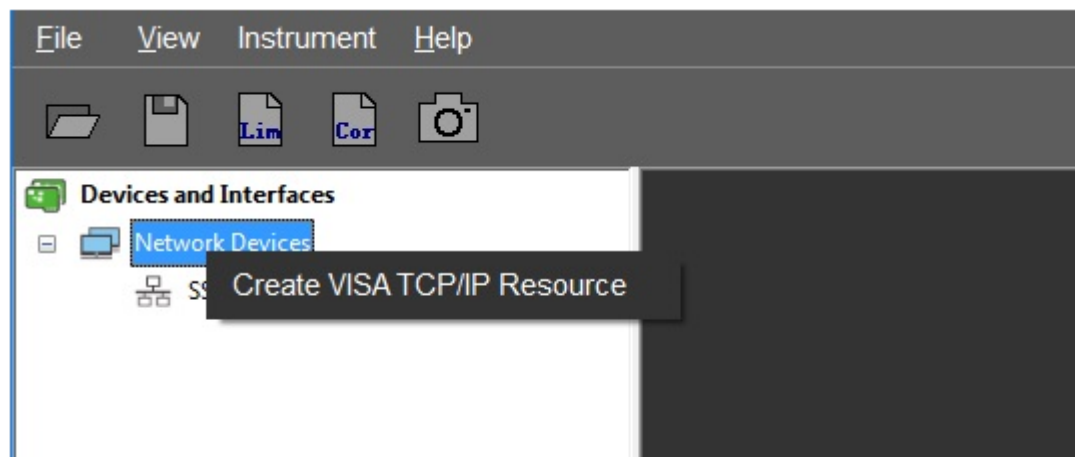
Note: If **EasySpectrum** can't find instrument resources, you can try connect the instrument to another usb port on the PC, reboot the PC and the instrument or check whether the usb cable has a problem. May also you can reinstall the NI-VISA.

2.1.2 To Connect the Instrument via LAN

EasySpectrum can not directly search LAN instrument, but you can manually create a lan-connect device to connect you instrument. In addition, you also can connect you lan instrument by adding a lan instrument with NI MAX if you have already installed the full-version NI-VISA.

1. Manual Create lan device to connect the instrument

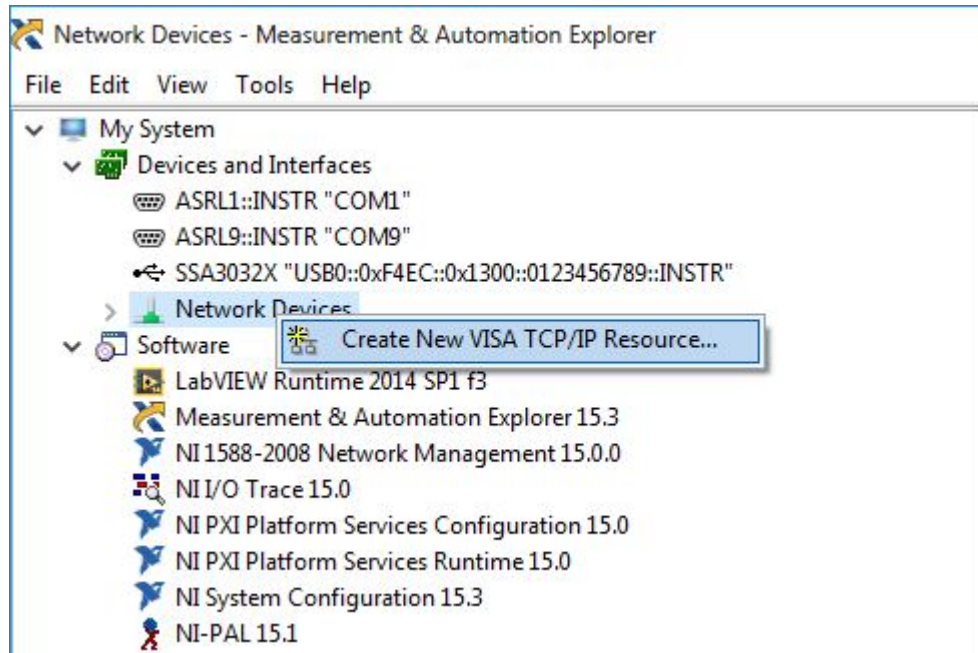
- (1) Please use a network cable to connect the instrument to the same LAN with PC, then config the instrument ip address **[System] -> [Interface] -> [LAN]** .
- (2) To start EasySpectrum and select "Network Devices" on the left connect panel then right click the mouse, and click "Create VISA TCP/IP Resource".
- (3) Input the instrument ip address and create it. Then a new resource will appear in the child list.



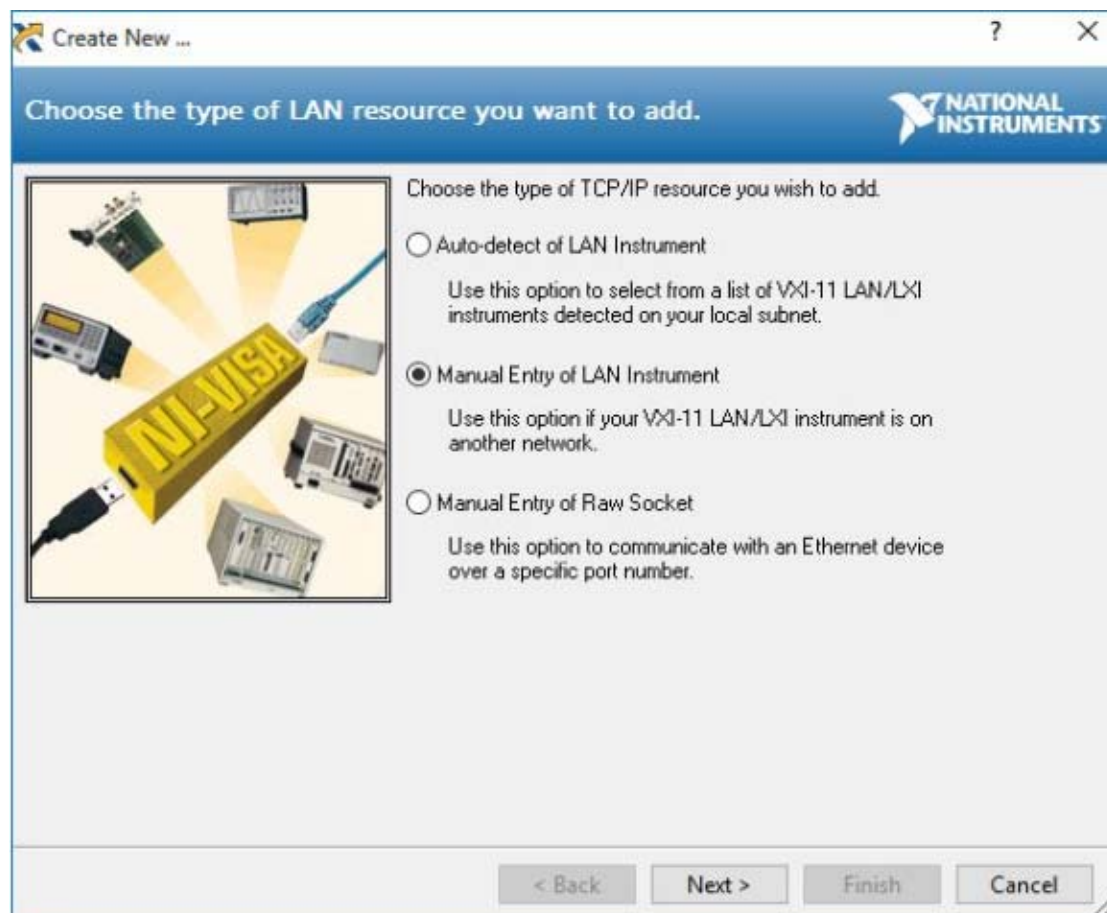
2. Add a lan instrument to connect the instrument

- (1) Please use a network cable to connect the instrument to the same LAN with PC, then config the instrument ip address **[System] -> [Interface] -> [LAN]** .
- (2) After the full-version **NI-VISA** is correctly installed, a shortcut icon named "NI MAX"

is displayed on the desktop. Double click the shortcut to run NI MAX, then click “Devices and Interfaces” to open the device list. Under the device list click “Network Device” to select it and then right-click the mouse. See figure below.



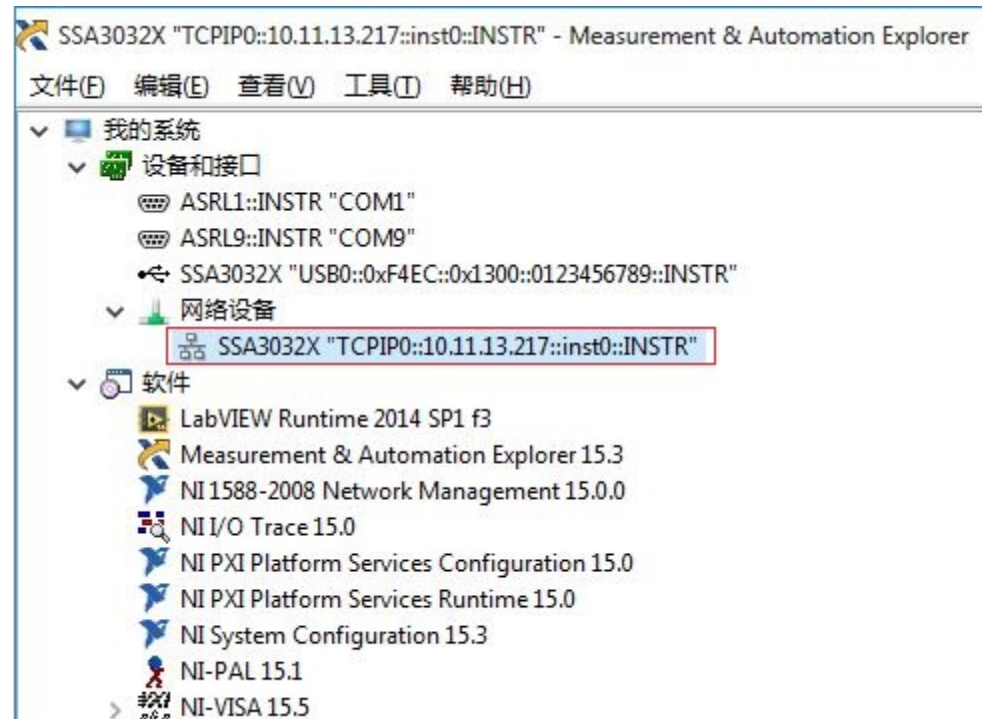
(3) Click “Create New VISA TCP/IP Resource. . .”. Then, “Create New” dialog box is displayed as shown in the figure below.



(4) Select “Manual Entry of Lan Instrument”, then click **Next**.



- (5) Enter the ip address of the instrument, then click **Finish** to create a new network device.



- (6) At this time run the EasySpectrum, a new network device is found and you can connect and control it now.